

Care™ Vest

Conductive Garment Electrode Vest

- Allows patients to position electrodes by themselves in hard-to-reach areas such as the upper- and mid-back regions
- Pre-punched holes in back panel provide pathways for electrode connectors and lead wires to lay outside of the vest
- Soft, breathable materials for daily comfort
- Form-fitting and light-weight to wear under clothing
- Durable front zipper enclosure
- Easy set-up and application
- Hand or machine wash for easy care
- 1 pkg of 4 each StayPut 2" x 2" Velcro electrodes included
- Variety of Velcro electrode options available for use with the vest
- Available in 5 sizes (*Custom-made vest for special size is available upon request. Additional lead-time and costs will apply.*)

- CEV-S** Small; chest: 34-38" waist: 30-36"
- CEV-M** Medium; chest: 38-44" waist: 32-38"
- CEV-L** Large; chest: 42-48" waist: 36-40"
- CEV-XL** Extra Large; chest: 46-52" waist: 38-42"
- CEV-2X** 2-XL; chest: 50-60" waist: 40-46"



*All vests are now entirely **black** in color. Gray vests (shown) are no longer available.

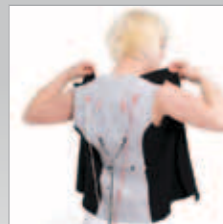
Device Shown Sold Separately



Set-up is easy! Pre-punched holes in the back panel of the vest provide pathways for the electrode wire connectors to exit out of and attach to the stimulator cables on the outside of the vest.



The interior of the back panel offers a large surface area for Velcro-backed electrodes to be positioned throughout the entire back area, especially areas that are hard to reach by the patient alone.



Once all the electrode pads are positioned in place and attached to the cables on the outside, the vest is easy to slip on. Pads stay securely in place on the vest, even when the vest is removed.



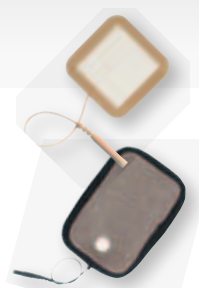
Medi-Stim's Care Vest is made of high-quality garment materials that are soft, stretchable and form-fitting, breathable, and latex-free. Durable zipper front. Machine or hand wash and air dry for easy care!

Electrode Options for the Care™ Vest:



STAYPUT White Foam Electrodes, Pin Wire, Pregelled with Velcro

- SP5000V** 2" Round, 4/pkg
- SP5050V** 2" x 2" Square, 4/pkg
- SP5090V** 2" x 3.5" Rect., 4/pkg
- SP7500V** 3" Round, 4/pkg



SOF-STIM Sensitive Skin Electrodes, Tan Tricot, Pin Wire, Pregelled with Velcro

- SS175V** 1.75" x 1.75" Square, 4/pkg
 - SS375V** 1.75" x 3.75" Rect., 4/pkg
- Conductive Garment Electrodes
- CGP83294** 2" x 3" Rectangle, 1 pair/pkg

Instructions for Use

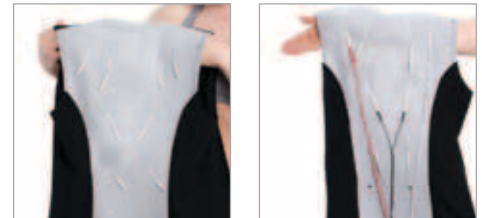
1

Remove electrodes from bag. Without removing the protective plastic electrode liners, feed the electrode connectors through the holes in the back of the vest where you want the electrodes to be placed. Press the electrodes firmly against the material. The electrodes have a Velcro backing that will hook onto the vest and will stay in place while wearing.



2

After the desired number of electrodes have been positioned into place, attach the lead wires from the stimulator (leave the stimulator OFF) to the electrode connectors that are exposed on the outside of the vest. Make sure that the connectors and cables are connected securely.



3

Peel off the plastic electrode liners, but save them to apply back onto the electrodes to prevent the gel from drying out when not in use. Once the liners are removed, try not to touch the sticky gel surface of the electrodes and avoid getting any dirt or debris onto the sticky gel surface.



4

Remove any undergarments that may prevent the gelled electrodes from making contact with the skin. Slip the vest on carefully, and pull the front panels gently forward to press the pads against the back. If necessary, try leaning up against a wall to help the electrodes make better contact with the skin. Zipper the front of the vest to close. If the electrodes are not in the desired location, remove the vest and reposition the electrodes.



5

After everything is in place, attach the cables to the stimulator and turn the stimulator ON. Follow the stimulator instructions for use as prescribed by your doctor. When treatment is finished, turn the stimulator OFF and remove the cables from the stimulator. (Cables can remain attached to the electrodes for easier storage.) Then, remove the vest and apply the saved plastic liners onto the gel surface of the electrodes to protect them when not in use. Remove electrodes and store in its bag to prevent drying out when not in use.



Device Shown Sold Separately

Instructions for Care and Cleaning

1. Hand-washing in cold water with gentle detergent is recommended. For machine washing, use cold water and gentle detergent in delicate cycle.
2. Air dry only. Do not use a dryer or iron.
3. Do not use bleach.
4. Keep out of reach of children or pets.
5. Replace electrodes when damaged, when the electrode gel has separated or is no longer adhesive, or when no stimulation is felt.

Distributed by